



## bluepoint 4 ecocure

UV point source

### System-Features

- Adjustable lamp output
- High power efficiency
- High intensity

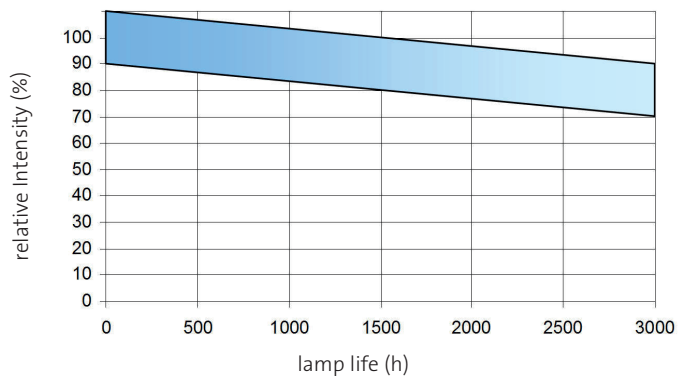
### Advantages

- Long lamp life
- Short curing time
- Low production cost
- Good price/performance ratio
- Ease of use

## bluepoint 4 ecocure

bluepoint 4 ecocure is an **economical high-performance point source** for all applications that need maximum UV intensity. Due to its **high intensity** shortest cycle times can be realized.

### Typical UV intensity drop



The typical **lamp life is approx. 3.000 hours** (guaranteed lamp life 2.000 hours). It is possible to readjust the lamp output in order to maintain the intensity.



A slide out module at the front panel of the housing ensures an **easy replacement of the lamp**. A user-friendly operation is possible through a touch-sensitive keypad.

### Lamp / shutter control

The exposure time is selectable between 0.1 and 999.9 seconds. It is also possible to operate the shutter by a foot-switch or a dry contact.

The **electrical lamp output can be adjusted in 1% steps from 60% to 100%**. The unit memorizes operating hours and lamp running hours.

### Interfaces

bluepoint 4 ecocure has an interface for a software update and a dry contact for an error signal.

### Additional features

The parameter settings can be memorized on 6 storage locations and loaded when needed. The current parameter settings are maintained even after switching off the mains supply.

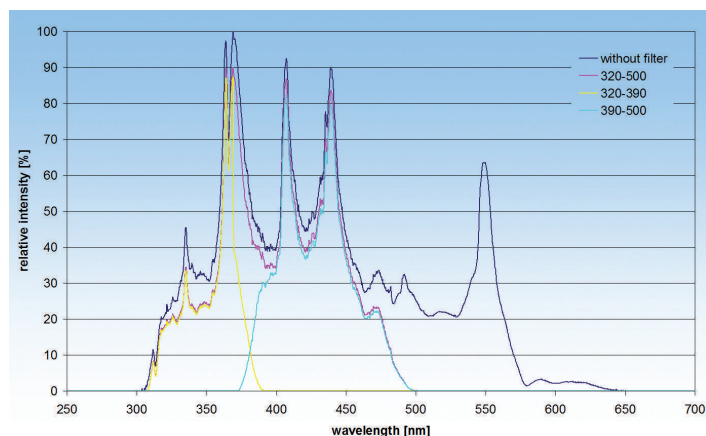
Error and warning messages are indicated at the display. Furthermore, bluepoint 4 ecocure has a standby function when the lamp is switched off.

Language of menu texts can be chosen between German, English, French and Italian. Three different filters are available to adapt the spectral output to the application.

## Light guides

The following light guides are available:

- Single light guide with the diameters 3 mm, 5 mm and 8 mm
- Double, triple and quadruple light guides with a diameter of the single arms of 3 mm each
- Standard lengths of 1 m and 1.5 m
- Differing lengths on request
- Glas fiber optic
- different types of filters available, see spectrum

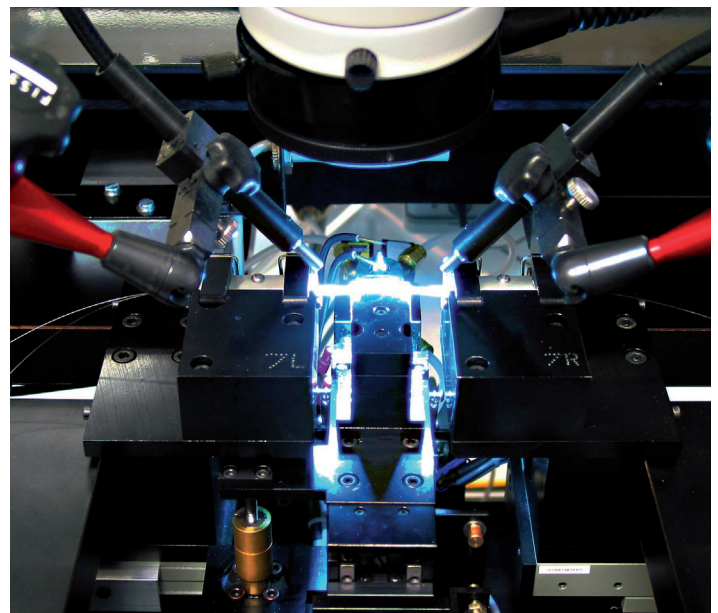


Spectra bluepoint 4 ecocure with different filters

## Applications

bluepoint point sources are suitable for a large range of applications:

- Bonding, fixing or potting of components in the electronic, optical and medical-technical industry
- Fluorescent excitation for material testing; also suitable for automatic image processing
- High-intensity UV irradiation for chemical, biological and pharmaceutical purposes



## Technical data bluepoint 4 ecocure

UVA-Intensity *)	2.000 - 14.000 mW/cm <sup>2</sup>
Typical lamp life	> 3.000 hours
Timer setting range	0,1 – 999,9 sec
High pressure mercury lamp	150 W
Mains supply	90 V - 264 V, 47 Hz - 63 Hz
Input current max.	2,2 A
Power rating	200 W
Dimensions (H x W x D)	155 x 450 x 310 mm
Weight	9,5 kg

\*) measured with 8mm test light guide and Dr. Hönle UV meter with UVA light guide sensor

**hönle**group

Collage

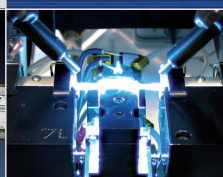
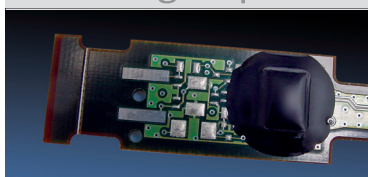
Enrobage

Remplissage

Dosage

Equipements UV

Hot bar soldering



aladin

eleco panacol-efd

eltosch grafix

hönle

panacol

printconcept

raesch

uv-technik speziallampen



Eleco Panacol-EFD, 125, av Louis Roche, Z.A. des Basses Noels, F-92238 Gennevilliers Cedex, France  
Téléphone: +33 /1/ 47 92 41 80, Fax: +33 /1/ 47 92 22 72. [www.eleco-panacol.fr](http://www.eleco-panacol.fr)

Toutes les données techniques d'utilisation des produits dépendent des applications spécifiques et peuvent différer des informations de cette brochure. Nous nous réservons le droit de modifier nos données techniques.  
Copyright, Eleco Panacol, Révision 07/19.